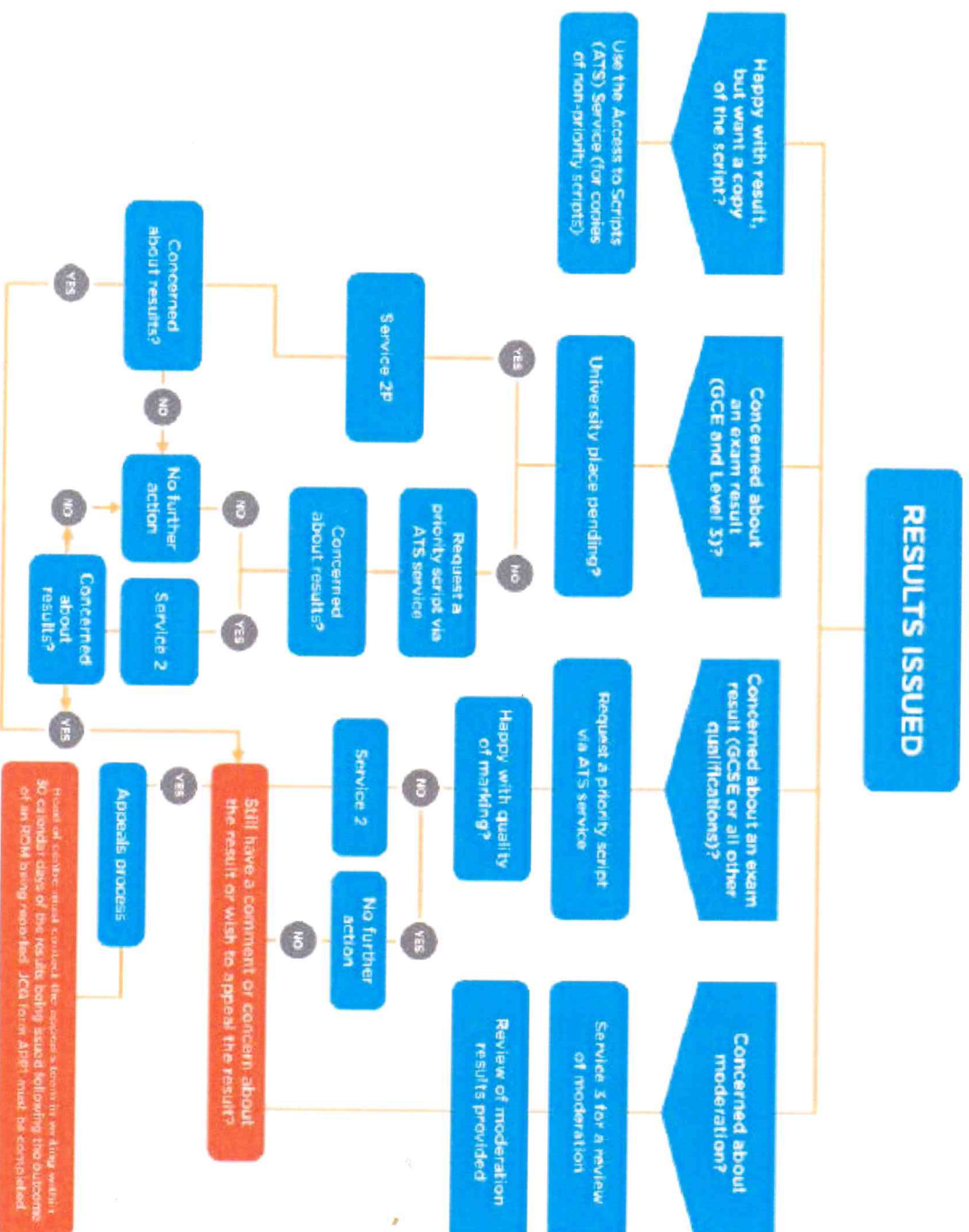


WJEC POST RESULTS SERVICES

Following the publication of results for each examination series, WJEC offers a range of post-results services relating to Review of Marking (ROM) and access to examination scripts.

Here's a quick guide to help you select the right service:



OUR SERVICES EXPLAINED

ROM Service 1 (clerical re-check)

A re-check of all clerical procedures leading to the issue of a result.

ROM Service 2 (includes clerical re-check) Post-results review of marking

A review of the original marking to ensure that the agreed mark scheme has been applied correctly.

ROM Service 2P (includes clerical re-check) Post-results priority review of marking (GCE and Level 3 only)

A priority review of the original marking to ensure that the agreed mark scheme has been applied correctly.

ROM Service 3

Post-results review of Moderation (not available for individual candidates)

A review of the original moderation to ensure adjusted marks have been applied consistently with the agreed mark scheme.

Access To Script (ATS)

Priority scripts requested prior to an ROM

Not priority for teaching and learning purposes. Returned after ROM closure.