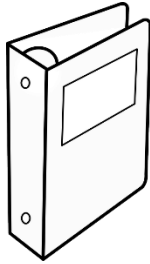


A LEVEL DRAMA & THEATRE

YEAR 11 TO 12 TRANSITION WORK

In simple terms, the subject content for A Level Drama is divided into three components:

COMPONENT	CONTENT	% of A Level
1. DRAMA & THEATRE	Written exam	40%
2. CREATING ORIGINAL DRAMA	Devised practical	30%
3. MAKING THEATRE	Scripted practical	30%



The following work is designed to help you prepare for
COMPONENT 2: CREATING ORIGINAL DRAMA
Please collate all work in an A4 ring binder.
This will form the beginnings of your **DRAMA FILE**.

Kneehigh

The Devising Component is an exciting opportunity to creatively adapt a story for the stage in the style of a studied practitioner. You will be studying the performance techniques and production methods of the **KNEEHIGH THEATRE COMPANY**

KNEEHIGH was founded by Mike Shepherd. They were a touring theatre company, based in Cornwall 1980-2021. **KNEEHIGH had a distinctive, unique artistic identity and yet, by their own admission, they did not have a set approach and preferred to work in a state of constant reinvention and exploration.** **KNEEHIGH** happily mixed naturalism with representation, dance, physical theatre, live music, visual imagery and puppetry, which gave their work a cheerful, anarchic feel.

Complete the research tasks into Kneehigh's production techniques, set designs and quirky use of props and puppetry. This work is worth doing well and will contribute directly to your WORKING NOTEBOOK (part of the 30% Component 2 assessment).



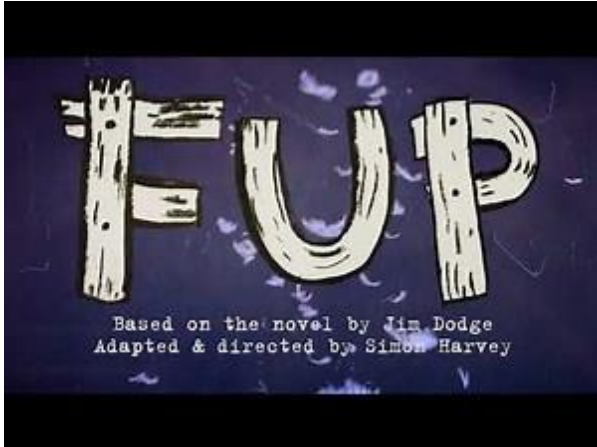
KEEP A RECORD OF ALL OF WEBSITES VISITED.

Your research will not be credited in your **WORKING NOTEBOOK** if you cannot cite the origin in your bibliography.

TASK1: Print out a chronological list of Kneehigh's past productions for your DRAMA FILE

TASK 2: Watch the following YouTube trailers for past Kneehigh productions. Use the space provided to list as many production elements as you can (e.g. live music, puppetry etc.).

<https://www.youtube.com/watch?v=Tlebr9TZG98>



FUP:

<https://www.youtube.com/watch?v=OiM3whG9Oxs>



REBECCA:

<https://www.youtube.com/watch?v=D1KXcmFrJW4>



THE TIN DRUM:

https://www.youtube.com/watch?v=8pnl_7WIFtg



BRIEF ENCOUNTER:

<https://www.youtube.com/watch?v=5nFpFdCFbFo>



946-ADOLPHUS TIPS:

<https://www.youtube.com/watch?v=TyHKir0CfeE>



HANSEL AND GRETEL:

https://www.youtube.com/watch?v=KT_dIFtMiKs



THE WILD BRIDE:

https://www.youtube.com/watch?v=7b9fS7Hym_4



MIDNIGHT'S PUMPKIN:

TASK 3: Watch both parts of the interview with Kneehigh founder, Mike Shepherd. Use the space provided to list Shepherd's advice regarding rehearsals approaching the work.

[Play part 1: Mike Shepherd at the Barns | Kneehigh - YouTube](#)



[Play part 2: Mike Shepherd at the Barns | Kneehigh - YouTube](#)



KNEEHIGH SET DESIGN RESEARCH

TASK 4:

- STUDY THE FOLLOWING SET DESIGNS.
- FIND 2-3 IMAGES OF SET DESIGNS FROM OTHER KNEEHIGH PRODUCTIONS.



REBECCA



**STEPTOE &
SON**

KNEEHIGH SET DESIGN RESEARCH



**946
ADOLPHUS
TIPS**



**A MATTER
OF LIFE
AND
DEATH**

KNEEHIGH PROPS RESEARCH

TASK 5:

- STUDY THE FOLLOWING PROP DESIGNS.
- FIND 2-3 IMAGES OF CREATIVE PROP DESIGNS FROM OTHER KNEEHIGH PRODUCTIONS.



THE TIN DRUM



THE RED SHOES



BRIEF ENCOUNTER

KNEEHIGH PUPPETRY RESEARCH

TASK 6:

- STUDY THE FOLLOWING PUPPETRY DESIGNS.
- FIND 2-3 IMAGES OF CREATIVE PUPPETRY DESIGNS FROM OTHER KNEEHIGH PRODUCTIONS.



**946: ADOLPHUS
TIPS**



THE TIN DRUM



FUP