

CONSIDERING A LEVEL?




A theater stage with red curtains and a spotlight. The spotlight is shining on the floor, creating a circular area of light. The text "WHAT YOU NEED TO KNOW..." is written in white capital letters across the center of the spotlight.


WHAT YOU NEED TO KNOW...

The background of the image is a theater stage. Red curtains are pulled back on either side, revealing a wooden stage floor. A spotlight shines down from above, creating a bright circular area on the floor. In the foreground, the backs of rows of red theater seats are visible, receding into the distance.

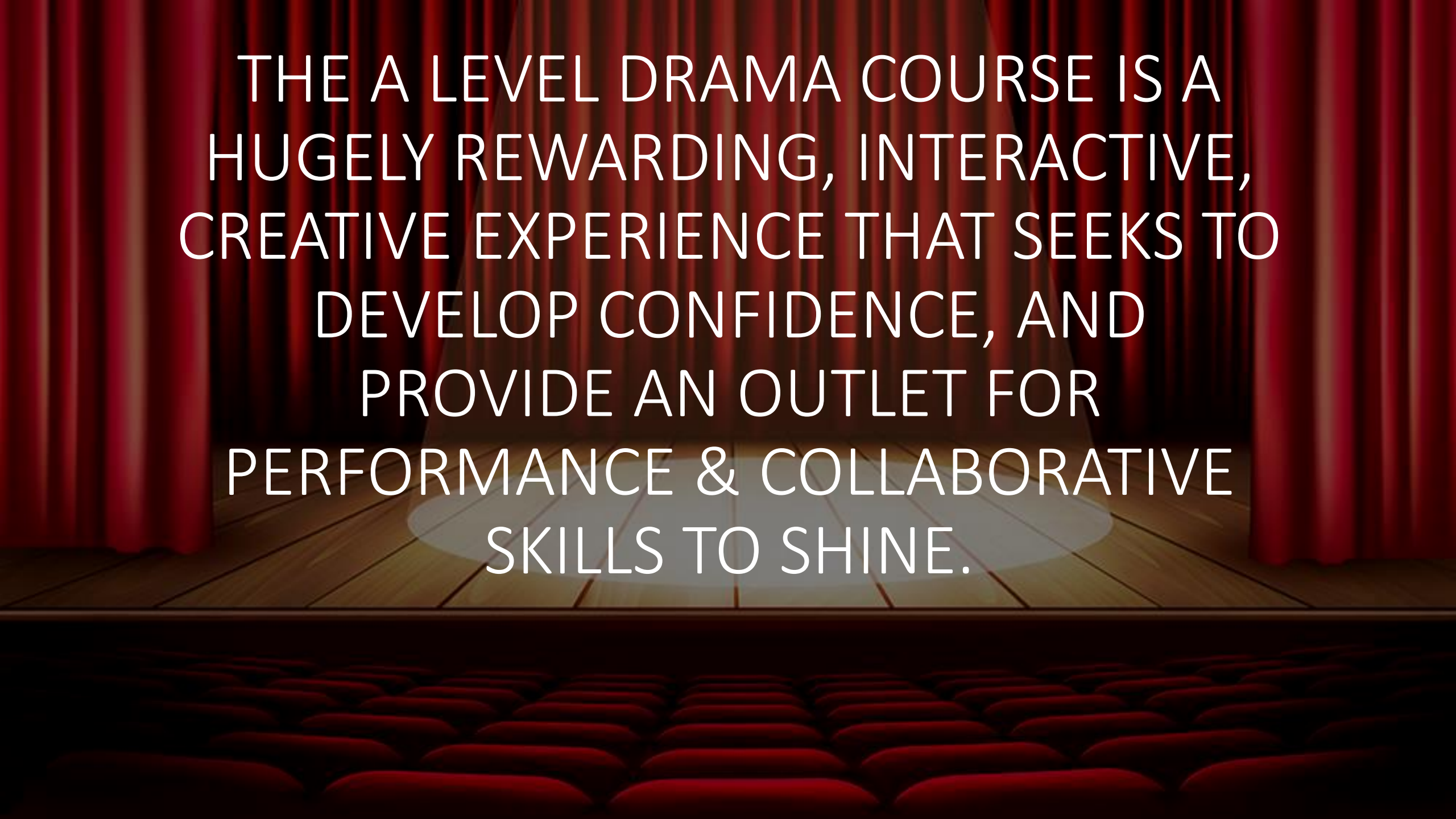
A LEVEL DRAMA IS RECOGNISED BY
RUSSELL GROUP UNIVERSITIES.
PAST STUDENTS HAVE GONE ON TO
STUDY AT OXFORD, CAMBRIDGE,
DURHAM...THE LIST GOES ON...

The background of the image is a theater stage. Red curtains are pulled back to reveal a wooden stage floor. A spotlight shines down on the center of the floor. In the foreground, the backs of rows of red theater seats are visible.

A LEVEL DRAMA HAS HELPED
PAST STUDENTS GAIN ENTRY TO
TOP DRAMA SCHOOLS:
RADA, GSA, MOUNTVIEW, BIRD,
LIPA, ITALIA CONTI, LAMDA,
CENTRAL...THE LIST GOES ON...

The image depicts a theater stage. In the background, there are heavy red curtains. A spotlight shines down from above, creating a bright circular pool of light on the wooden stage floor. The text is centered within this spotlight. The foreground shows the backs of many rows of red upholstered seats, receding into the distance.

GCSE DRAMA IS USEFUL BUT
IS NOT A REQUIREMENT
FOR THE A LEVEL

The background of the image is a theater stage. Red curtains are pulled back on either side, revealing a wooden stage floor. A spotlight shines down on the center of the floor, creating a bright circular area. The text is overlaid on this scene.

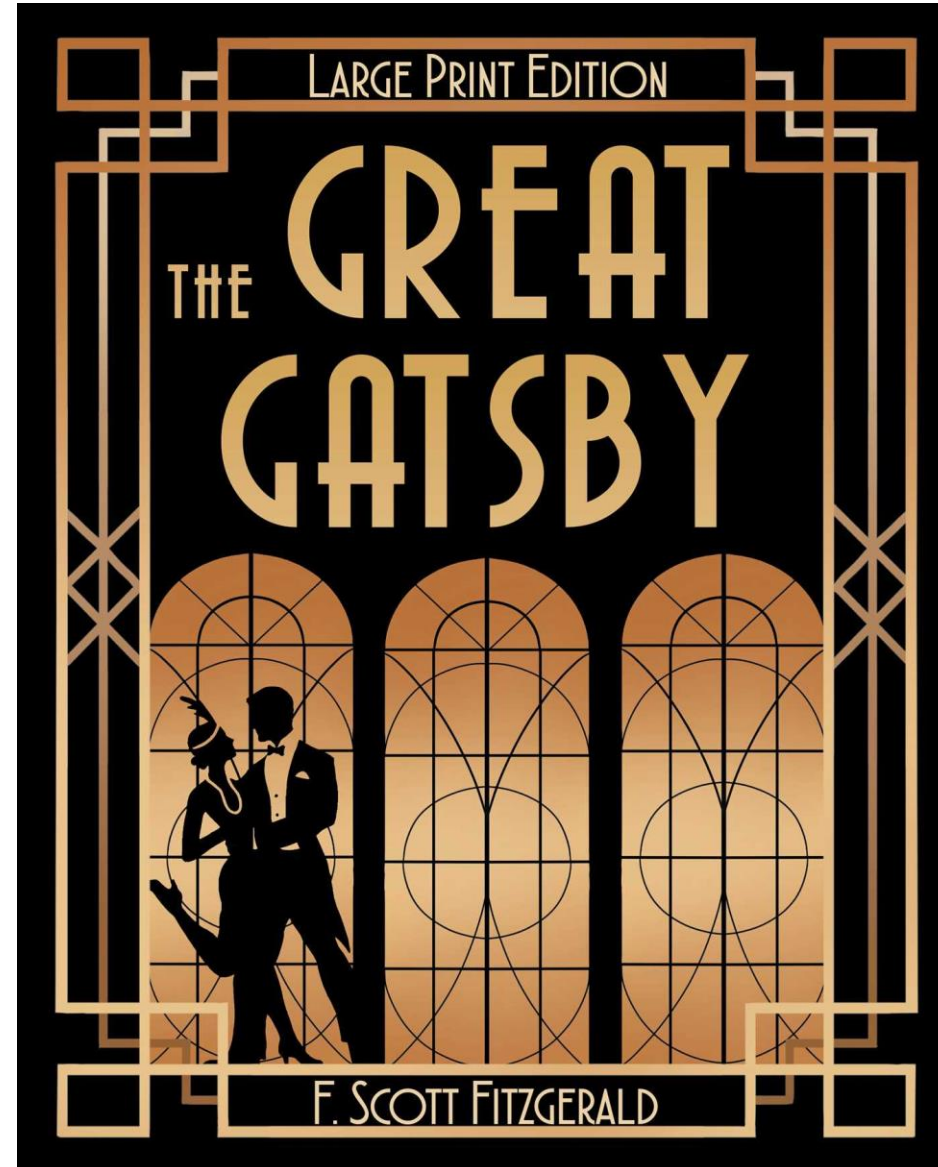
THE A LEVEL DRAMA COURSE IS A
HUGELY REWARDING, INTERACTIVE,
CREATIVE EXPERIENCE THAT SEEKS TO
DEVELOP CONFIDENCE, AND
PROVIDE AN OUTLET FOR
PERFORMANCE & COLLABORATIVE
SKILLS TO SHINE.

The background of the slide is a stage with red curtains. A spotlight is shining on the wooden floor in the center, creating a circular pool of light. The text is centered within this spotlight.

SO...WHAT DOES THE
A LEVEL DRAMA & THEATRE
COURSE ENTAIL?
READ ON...

An open book with aged, yellowed pages lies on a dark, textured surface. Above the book, several paper flowers of various sizes and designs are scattered, along with numerous small, light-colored paper butterflies. The scene is dimly lit, creating a warm, intimate atmosphere. The text is centered over the book in a clean, white, sans-serif font.

WHAT DO THE FOLLOWING
STORIES HAVE IN COMMON?



ALICE IN WONDERLAND

The Original 1865 Edition With Complete Illustrations
By Sir John Tenniel (A Classic Novel of Lewis Carroll)



LEWIS CARROLL

THE NO.1 INTERNATIONAL BESTSELLER

MARKUS ZUSAK



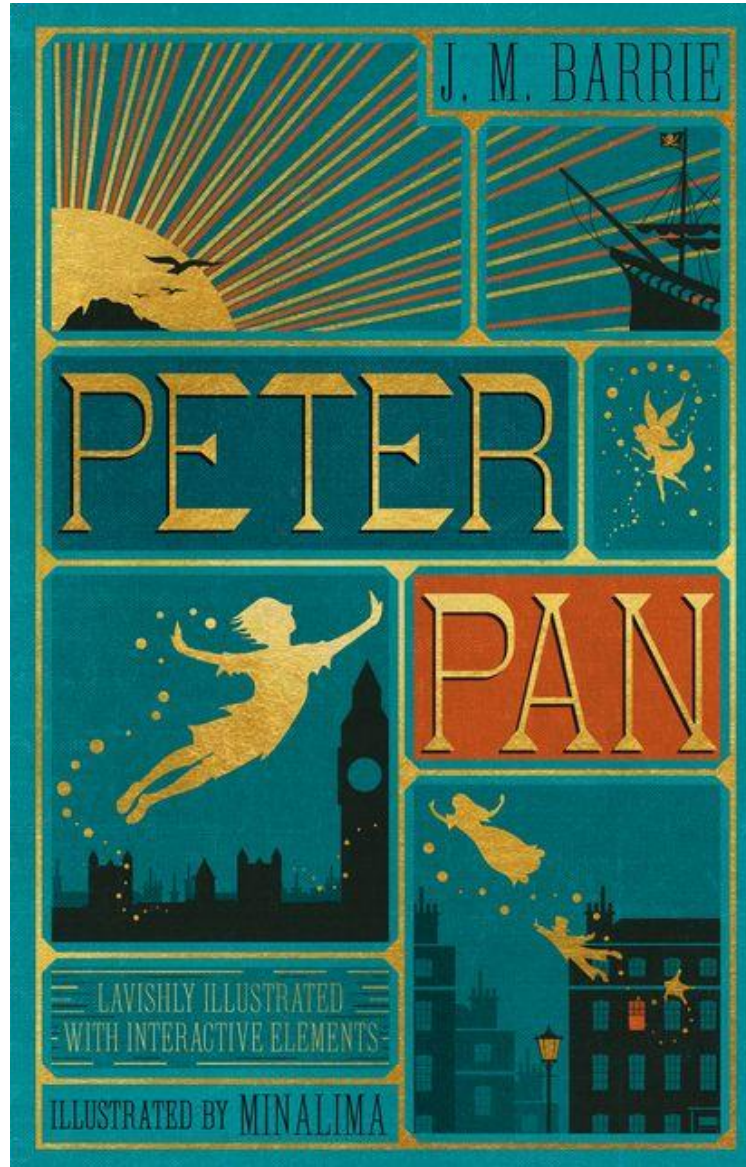
The Book Thief

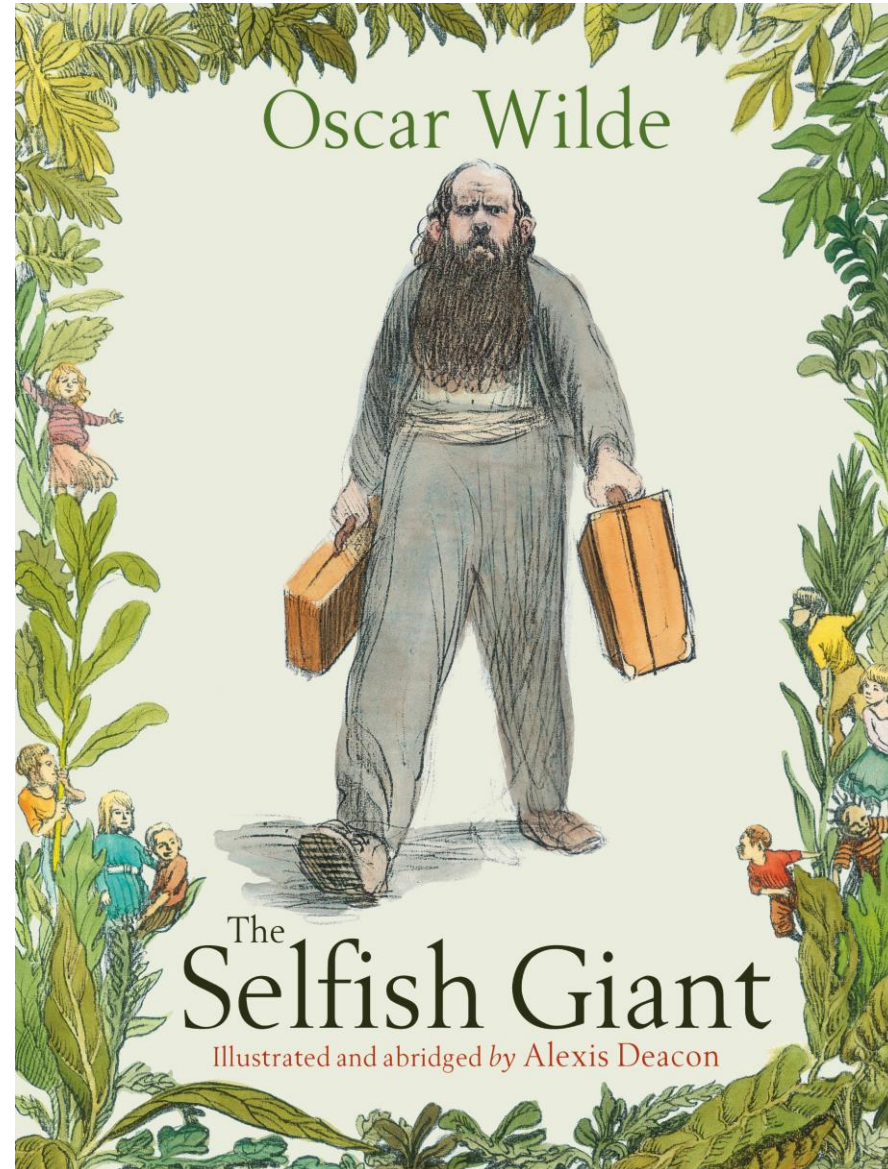
'A novel of breath-taking scope, masterfully told'
Guardian

Roald Dahl
MATILDA

Illustrated by
Quentin Blake



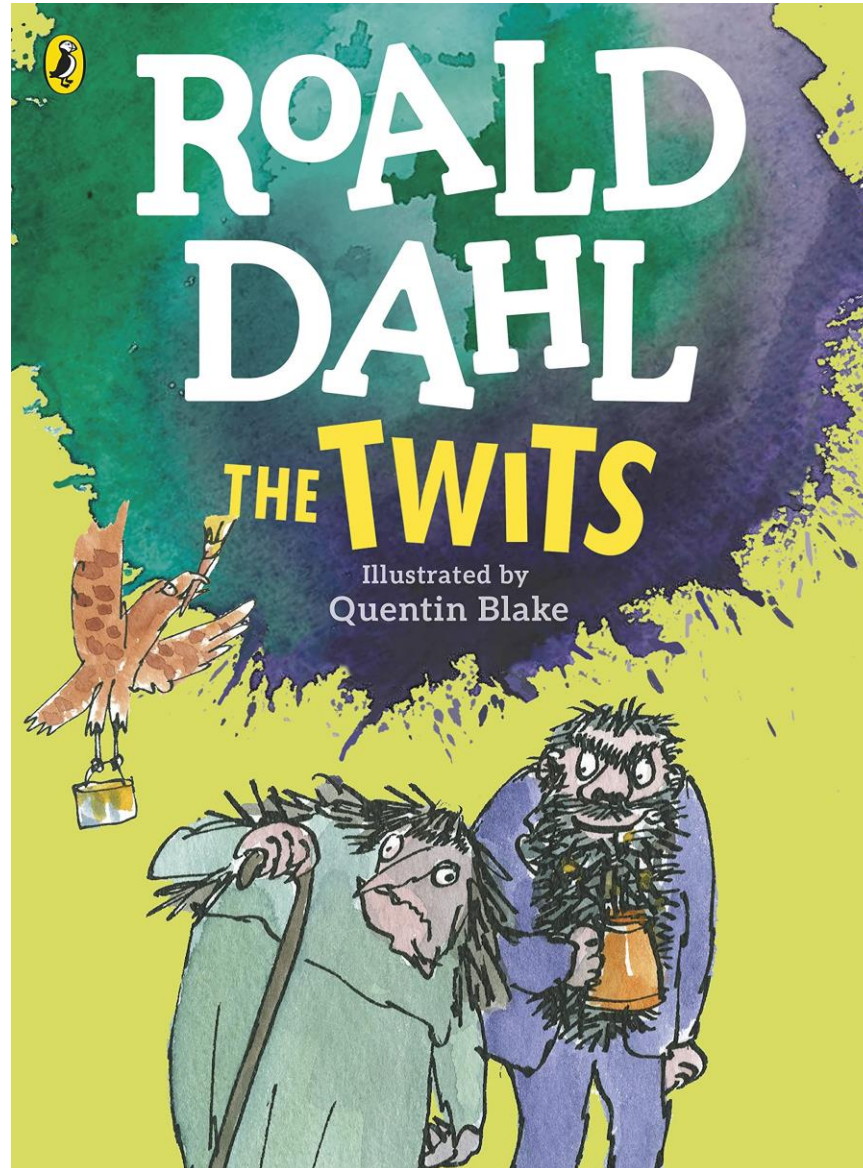


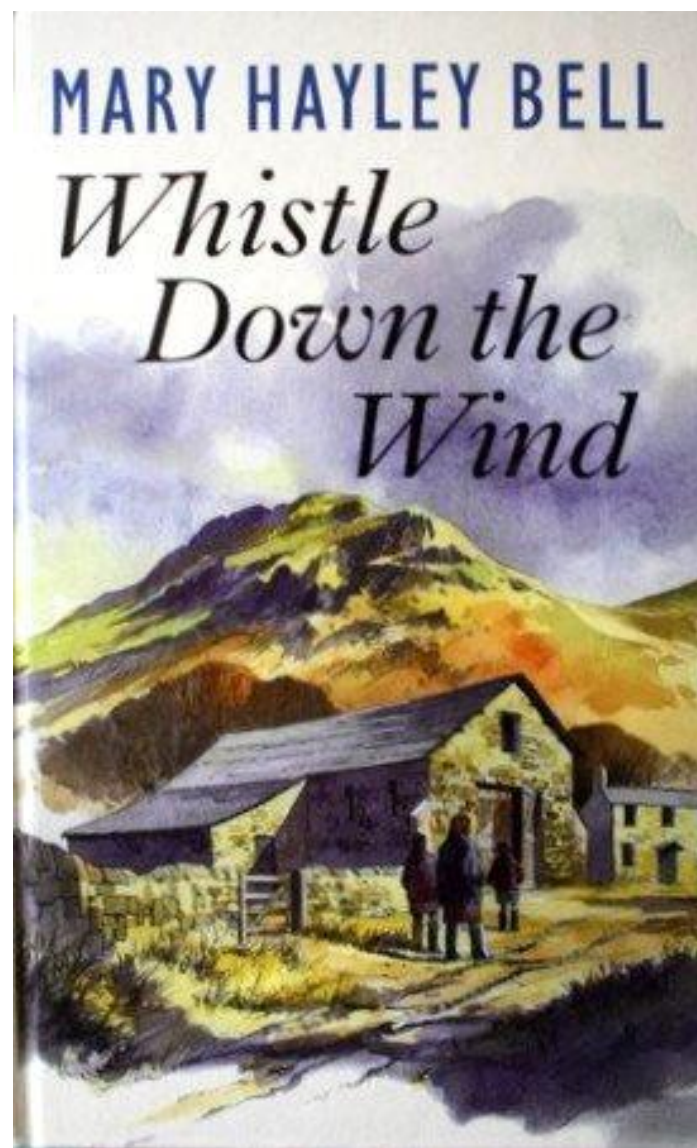


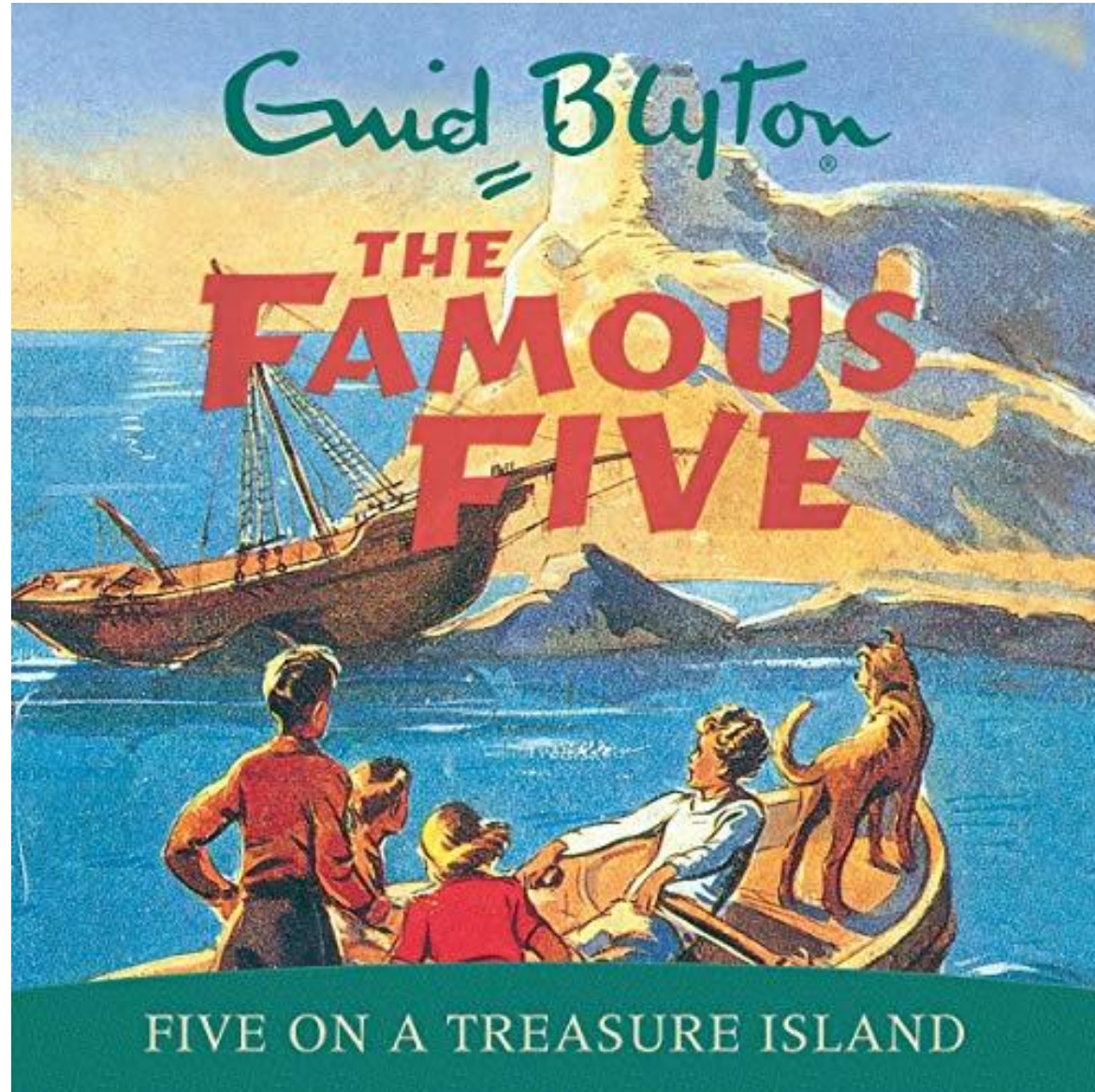
Oscar Wilde

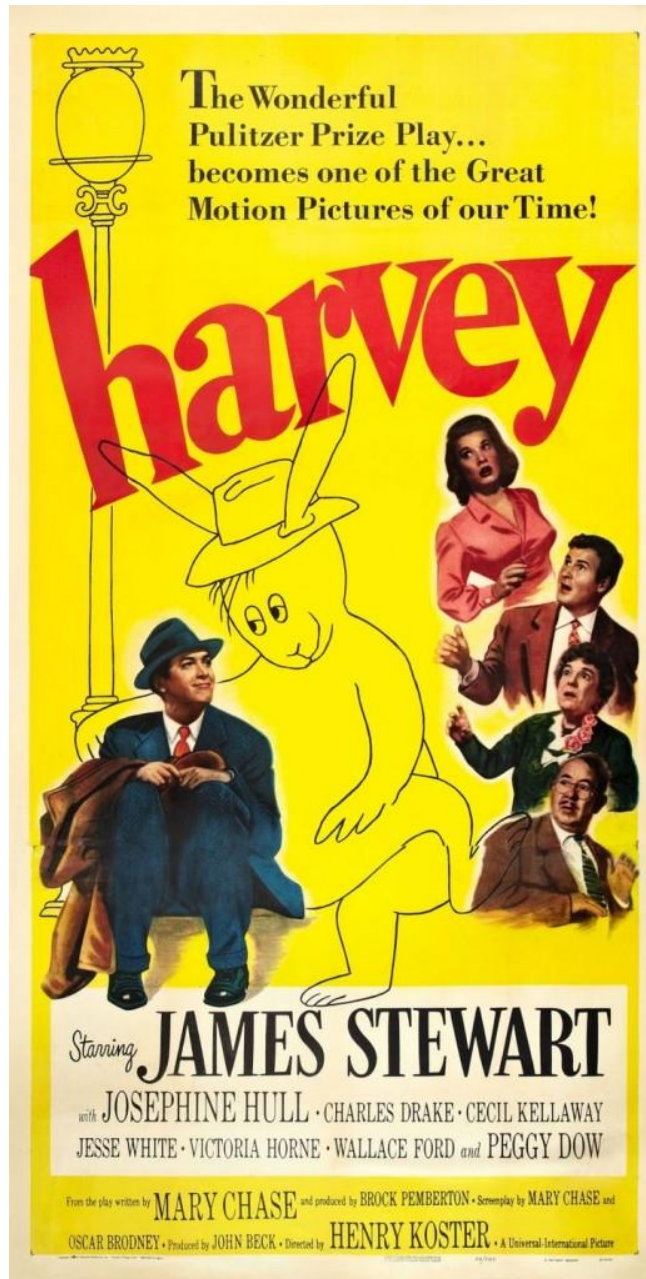
The
Selfish Giant

Illustrated and abridged by Alexis Deacon



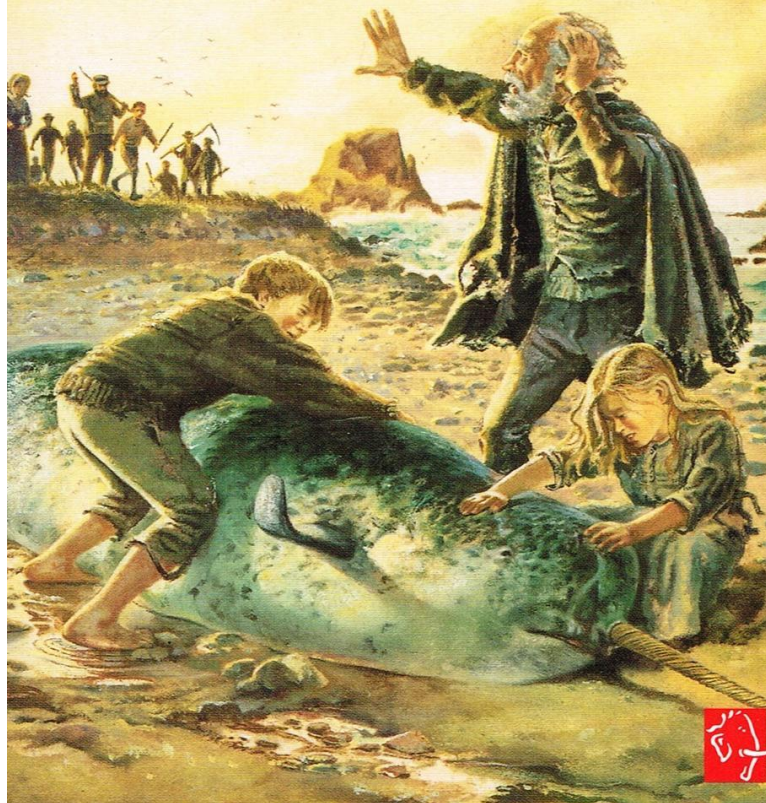






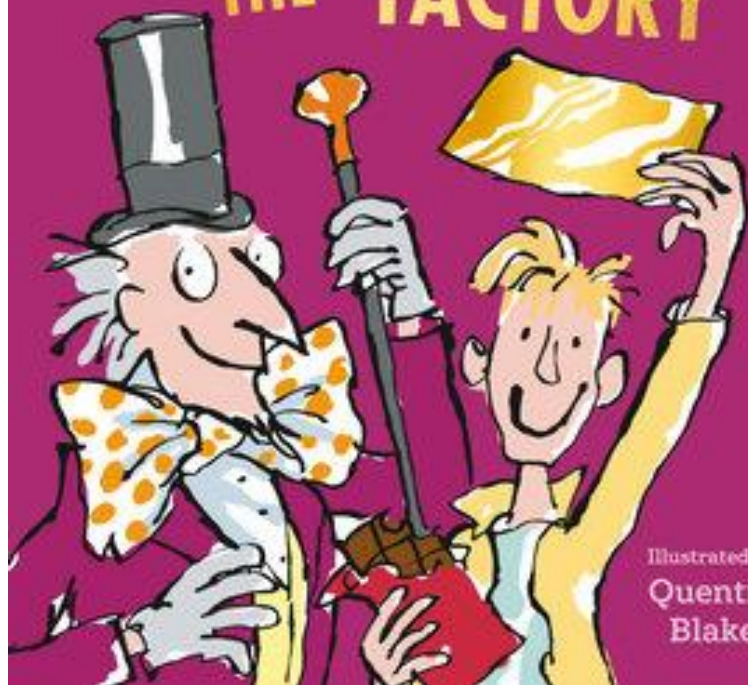
MICHAEL MORPURGO

WHY THE WHALES CAME

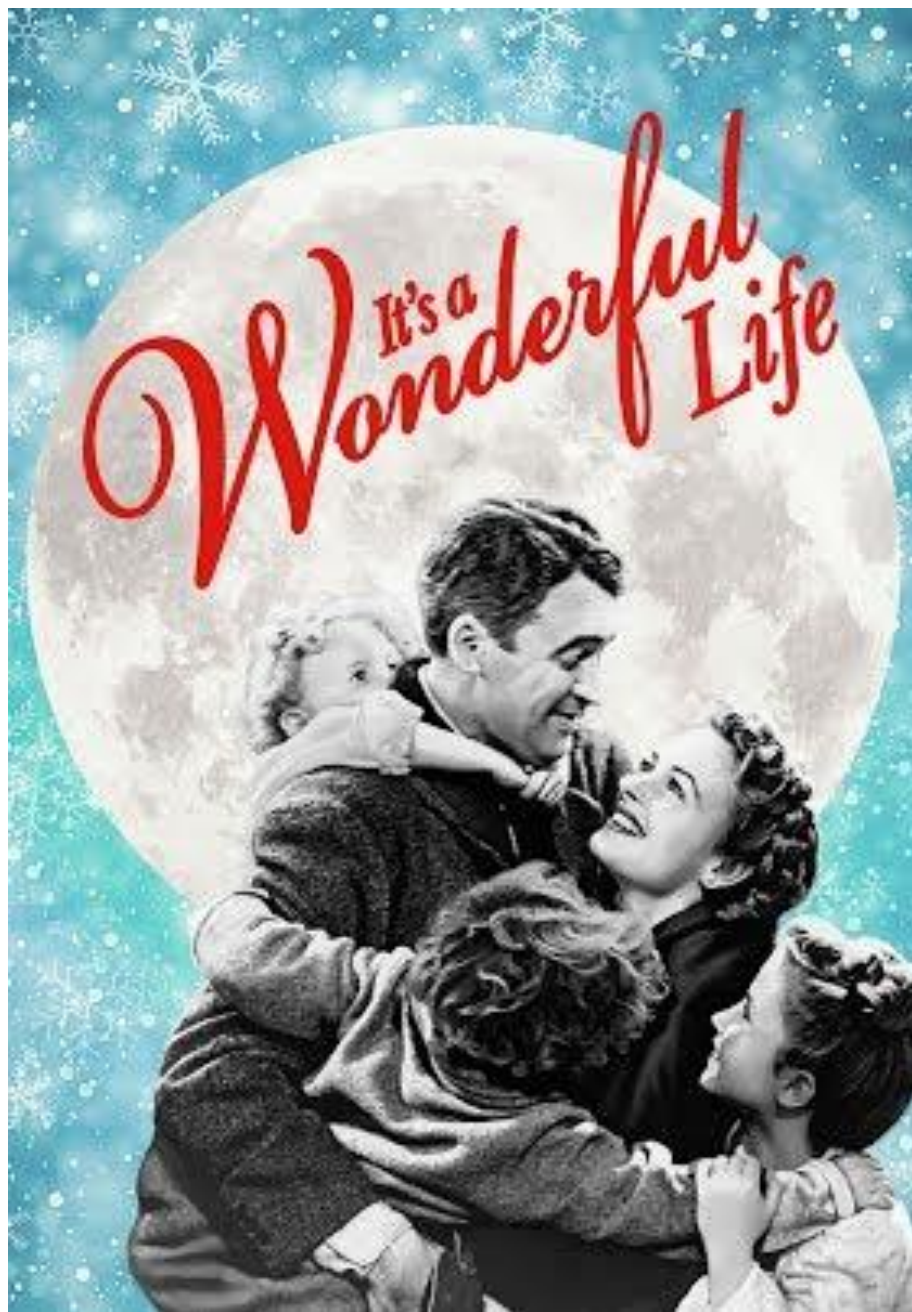


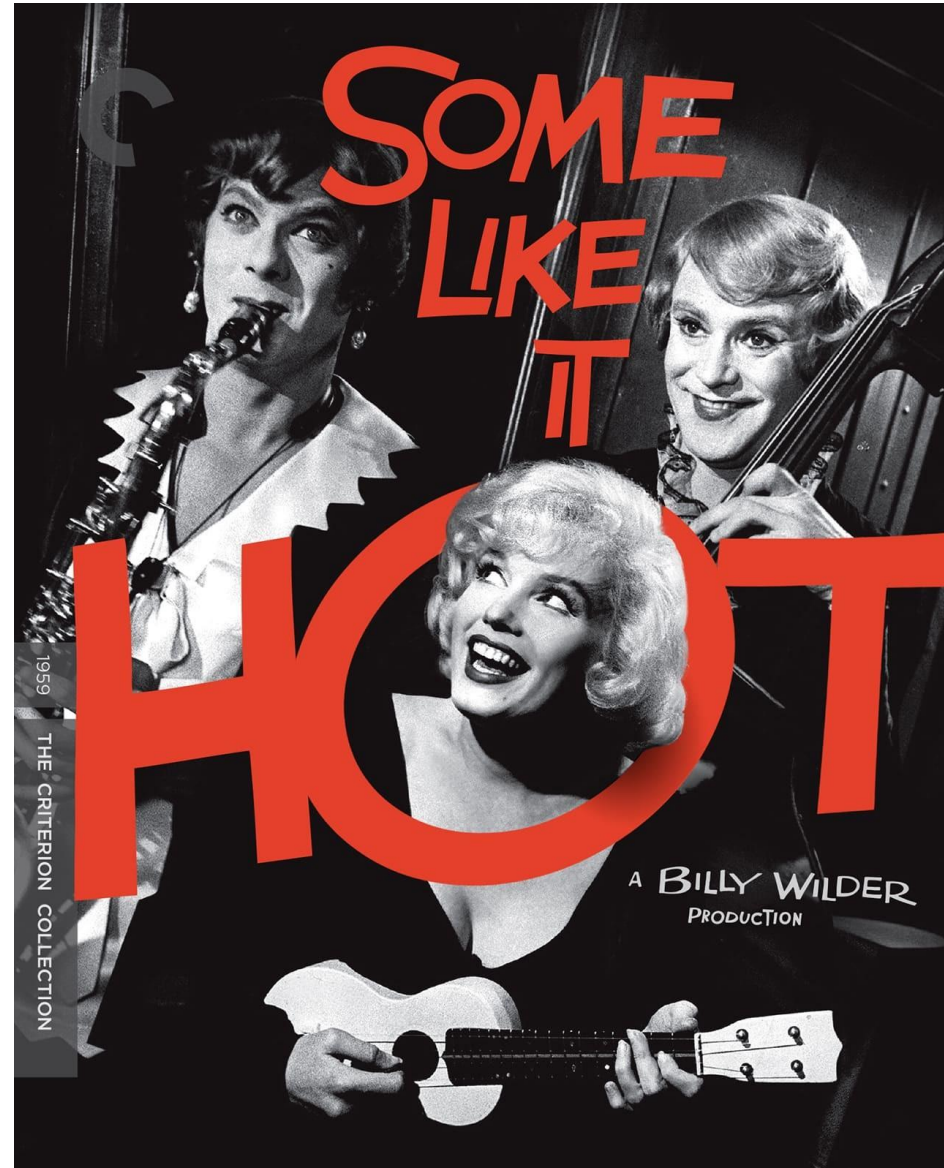
THE GOLDEN EDITION
ROALD DAHL

CHARLIE
AND CHOCOLATE
THE FACTORY



Illustrated by
**Quentin
Blake**

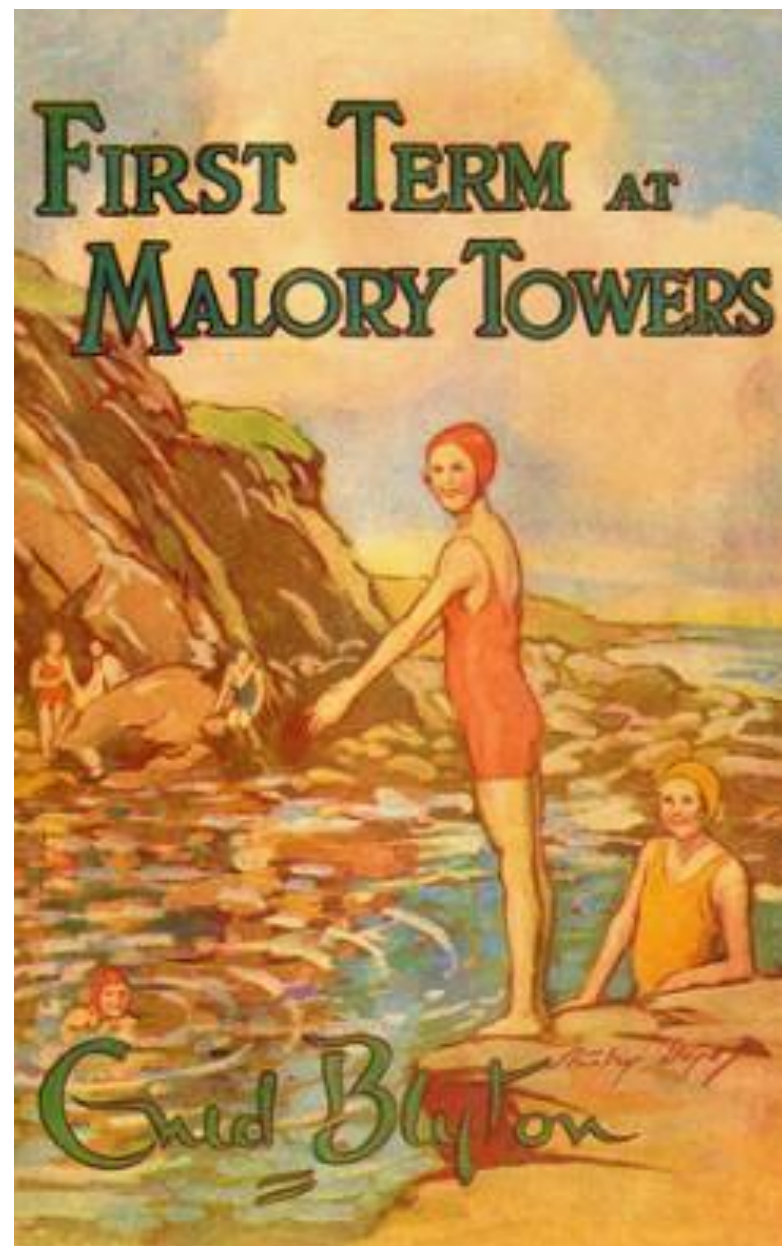


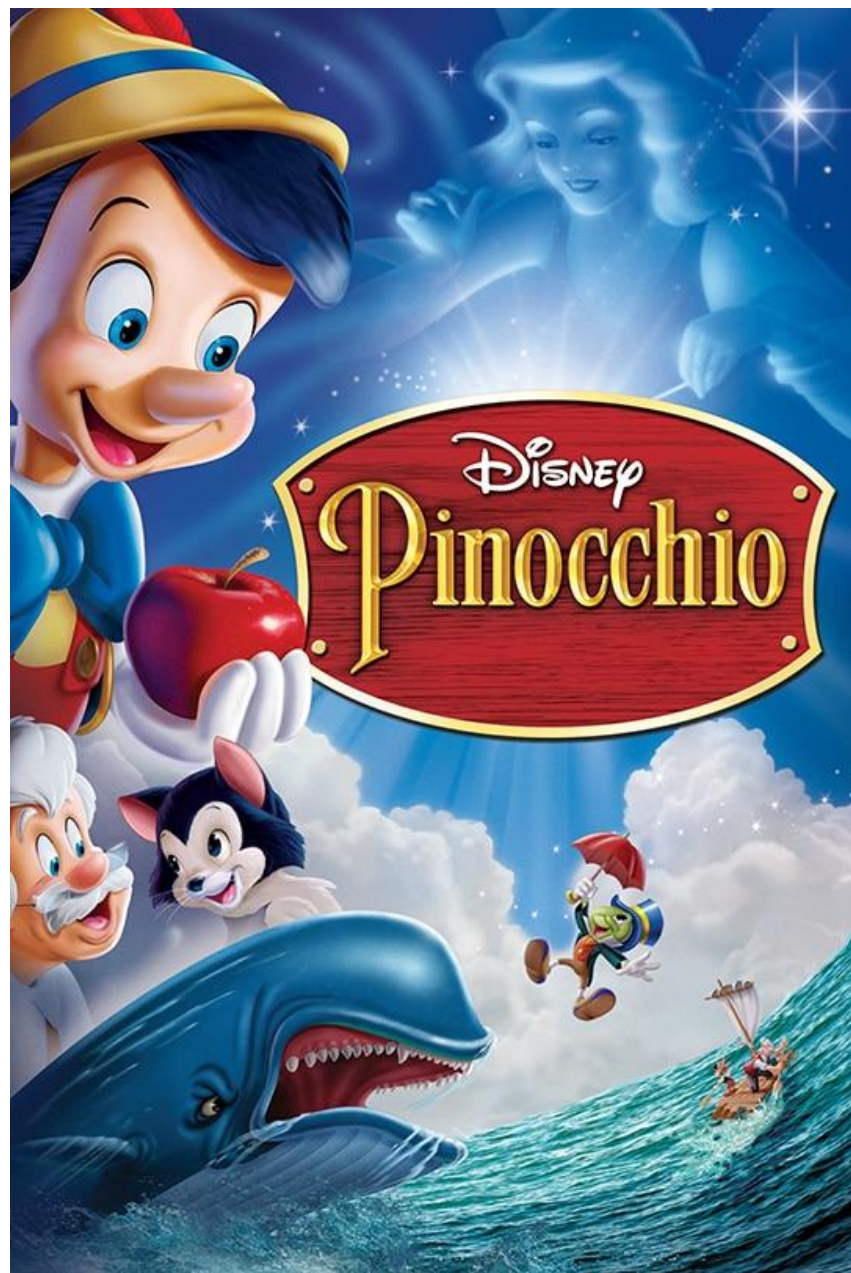




The SECRET GARDEN

FRANCES HODGSON BURNETT
illustrated by
GRAHAM RUST





The background of the image is a theater stage. Red curtains are pulled back, revealing a wooden stage floor. A spotlight shines down on the center of the stage. In the foreground, rows of red theater seats are visible, receding into the distance.

THE STORIES HAVE ALL BEEN
ADAPTED FOR THE STAGE
BY PREVIOUS A LEVEL DRAMA GROUPS.
“CREATIVE ADAPTATION” IS A HUGELY
POPULAR PART OF THE COURSE!

HOW IS THE DRAMA A LEVEL DIVIDED UP?

60% PRACTICAL ASSESSMENT
40% WRITTEN EXAM



The background of the slide features a series of diagonal beams of light in shades of orange, yellow, and red, emanating from the top right corner where several stage spotlights are visible. The left side of the slide is a solid dark color.

60% PRACTICAL DIVIDED INTO 2 COMPONENTS:

A CREATIVE ADAPTATION OF A STORY FOR THE STAGE:

1. WRITING THE SCRIPT
2. PUPPETRY
3. MULTI-MEDIA
4. MUSIC & DANCE
5. ACTING & DIRECTING
6. MULTI-ROLING
7. AUDIENCE INTERACTION
8. MASK WORK

THE STUDY & PERFORMANCE OF THREE SCRIPTED
EXTRACTS OVER THE TWO-YEAR COURSE.

CHALLENGE YOUR ACTING SKILLS! DEVELOP COLLABORATION AND LEADERSHIP SKILLS!

40% WRITTEN EXAM

TWO PLAYS EXPLORED FROM THE PERSPECTIVE OF:

1. ACTOR
2. DIRECTOR
3. SET DESIGNER
4. COSTUME DESIGNER
5. LIGHTING & SOUND DESIGNER

ONE LIVE THEATRE ESSAY, FROM A CHOICE OF FOUR.
THEATRE TRIPS ARE BACK ON!



alra
THE ACADEMY OF LIVE AND RECORDED ARTS

GSA
est. 1935

LIPA

THE LIVERPOOL INSTITUTE FOR PERFORMING ARTS

SCHOOL
OF SPEECH & DRAMA
UNIVERSITY OF LONDON

LAMDA



E15
ACTING SCHOOL

ARTS
EDUCATIONAL
SCHOOLS LONDON

THE
OXFORD
SCHOOL
OF
DRAMA

DRAMA
STUDIO

ual: university
of the arts
london



WHAT DRAMA SCHOOLS HAVE PAST STUDENTS GONE TO?

Guildhall
SCHOOL
of Music & Drama

Manchester
Metropolitan

TEAM LEADER THEOLOGIST BUSINESS COACH WRITER JOURNALIST
PSYCHOTHERAPIST TOUR GUIDE CREATIVE DIRECTOR ADVERTISING EXECUTIVE
PRODUCER PRIVATE INVESTIGATOR SOLDIER THEATRE MANAGER
DIRECTOR LIFE COACH SALES MANAGER RESEARCH ANALYST ACTOR
SET DESIGNER MANAGING DIRECTOR ENTERTAINMENTS MANAGER
HEADTEACHER POLICE OFFICER DIPLOMAT
HEAD OF HUMAN RESOURCES PERSONAL ASSISTANT AIR CABIN CREW
MARKETING DIRECTOR PR MANAGER SOCIAL WORKER
RETAIL MANAGER COLLEGE LECTURER TRAINING AND DEVELOPMENT MANAGER
PLAYWRIGHT YOUTH WORKER CHILDREN'S ENTERTAINER ESTATE AGENT
PSYCHOLOGIST RADIO BROADCASTER
TV RESEARCHER STUNT PERFORMER

WHAT CAREER PATHWAYS HAVE PAST DRAMA STUDENTS TAKEN?

NURSE AUTHOR
SENIOR CIVIL SERVANT TEACHER PROBATION OFFICER POLITICIAN
MEMBER OF THE CLERGY SCRIPTWRITER
BUSINESS DEVELOPMENT MANAGER TV PRESENTER HOTEL MANAGER

A Level Drama isn't
just for future
actors.

A Level Drama is for
future solicitors,
educators, business
leaders... and many
more.

