



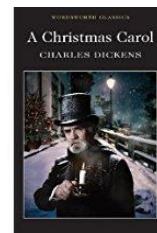
GCSE English Language and English Literature

Further Information

How is Year 10 grouped in English?

We currently have 11 teaching groups in English at St. Aidan's in Year 10. Both English Language and English Literature are taught to **all** students. The English only course in the previous specification no longer exists. We will however consider entering one small group for Functional Skills and a bespoke English Language and Literature course if students find the GCSE inaccessible (predicted not to get a grade in this subject). Apart from this, all groups will cover the same content, the only difference being text choices for Literature, which will be chosen by the teacher from AQA's selection on the new specification (see the texts referred to below). When grouping for Year 10 we use the students' KS3 English assessments and take into account how much progress they have made since KS2. We also refer to the Year 9 teacher's comments. Due to St. Aidan's being a high achieving school, groups 1 to 7 usually share a similar range of target grades (9 to 6 on the new specification). There is no real difference in terms of ability between these groups and they will be pitched the same. In Year 10 both sides of the year group are timetabled at the same time in English so it is likely that students will find that they are not taught with the same students from their Year 9 class. They will also most likely find that they won't be taught by their year 9 teacher. This can make for an unsettling period at first but students adjust very quickly to their new class and teacher.

Possible literature text choices:



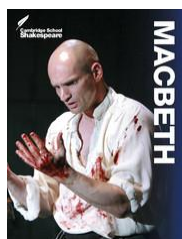
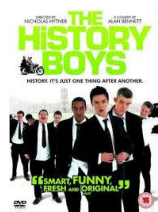
What can my child read in readiness for GCSE?

We suggest that your child read a wide selection of texts: autobiography, biography, travel writing, diaries, 19th century to 21st century fiction covering a range of genres, broadsheet newspapers and articles. Mrs Roth has a wide selection of book lists in the library. Reading lists for GCSE can also be found on the English Department pages on the school website.

What can I do to support my child?

- Discuss what they like/don't like about the set texts
- Talk about a controversial topic in a newspaper article and encourage your child to form an opinion

- Arrange a visit to the theatre (Shakespeare as well as modern playwrights).
- Ask to see your child's notes or essays and talk about what they have learned e.g. what have they found difficult/interesting/unusual
- There are many revision guides that may help students in all areas of both courses, for example Cambridge University Press and Hodder which are both endorsed by AQA.



What are the main changes from the previous specification?

Both Language and Literature courses are linear and assessed by exam only (with no controlled assessments or coursework). There is much emphasis on spelling, punctuation and grammar and students will be expected to closely analyse extracts from a wide range of texts showing knowledge of 'whole texts' in their answers. The exams are no longer tiered (Foundation and Higher); instead the exams will have questions increasing in difficulty throughout the paper.

Literature text choices are: *Frankenstein*, *Jekyll and Hyde*, *Jane Eyre* and *A Christmas Carol* for the 19th Century novel unit.

Shakespeare: *Macbeth*

Modern plays: *The History Boys*, *Inspector Calls*, *The Curious Incident of the Dog in the Night-Time* or *Blood Brothers*.

Some examples of a varied selection of poetry: 19th century Romantic poets, First World War poets, Carol Ann Duffy, John Agard, Ted Hughes and Tennyson.

Year 10 teachers will make their literature text choices once they have met their classes. The course outline can be found on the department pages of the school website which shows assessment weightings and when internally marked unit assessments are conducted.

Parents will also find wider reading lists and guidance on how to help students in the same area.