



ST. AIDAN'S

CHURCH OF ENGLAND HIGH SCHOOL

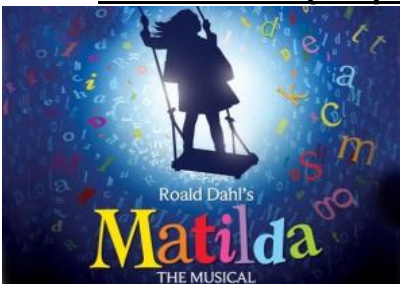
ST AIDAN'S PERFORMING ARTS TRIP TO LONDON (1 COACH) 12 – 14 JUNE 2017 (LONDON) 15 – 16 JUNE (WORKSHOPS IN SCHOOL)

The London Performing Arts Trip offers pupils the superb opportunity to immerse themselves in the very best that London and the West End have to offer. This exciting four full day trip will include 3 award winning shows, a visit to Drury Lane theatre and workshops run by professionals from the performing arts industry. This fantastic experience will be enjoyed by any pupil with a creative interest and should be a priority for those who are considering taking GCSE Music, Dance or Drama. We will spend the last two days in school doing performance workshops.



- ❖ Three full days and two nights accommodation in Covent Garden. We depart at approx 8.00am on the 12th June by coach returning at approx 22.00 on the 14th June.
- ❖ Full Board
- ❖ 2 x Dinner in London restaurants
- ❖ 3 London Theatre Shows
- ❖ Guided tour of Drury Lane Theatre including backstage areas
- ❖ Guided tour of BBC Broadcasting House
- ❖ Practical Workshops at pineapple studios with the cast from west end shows
- ❖ Coach Travel to and from London and during visits

Theatre Shows (sample of possible shows available)



More will be added to the trip and we will finalise the details nearer to the departure date but the visit will offer a full and exciting itinerary. **The price for the trip will be approx. £440.00 but this will be confirmed in September when we know how many pupils would like to go.**

Headteacher: Mr J Wood

St. Aidan's Church of England High School, Oatlands Drive, Harrogate, North Yorkshire HG2 8JR

Tel: 01423 885814 • Fax: 01423 884327 • Email: admin@staidans.co.uk • www.staidans.co.uk



ST. AIDAN'S

CHURCH OF ENGLAND HIGH SCHOOL

ST AIDAN'S VISIT TO VALKENBURG HOLLAND (1 – 2 COACHES) 11TH – 16TH JUNE 2017

This is an exciting opportunity for both boys and girls with a particular interest in sport to combine 3 fixtures against local clubs combined with visits in the surrounding area. You will be based in Valkenburg situated in the province of Limburg, one of the most unusual parts of Holland – it has hills! It's inland position close to the borders of Germany, Belgium and Luxembourg, provides a great venue for your sports tour. With formidable local sports teams Valkenburg is an excellent destination. It is also a safe and cosmopolitan town with good recreational facilities. The pedestrianised centre enables pupils to explore safely.



The whole group



Girls Hockey teams



Borussia Monchengladbach

You will travel to and play local clubs rather than schools therefore timing will be late afternoon or evening and excursions are planned around this. Each day we will have practice sessions either on an open grass area or in a sports hall in the town.

Travel is by executive coach and Eurotunnel to Calais. We use two hotels in the heart of Valkenburg, 1 street away from the main attractions. Rooms sleep mainly 2, 3 to 4 with en-suite facilities on a full board basis. Excursions across the borders will make this a truly 'European' destination. Entrance fees to **all attractions** are included in the price.

We have included a day trip into Germany to visit its largest theme park, Phantasialand. Are you brave enough for the 'Black Mamba', an inverted roller coaster, so that riders' legs are dangling beneath them as they hurtle through ravines, plunge down chasms with barely time to scream as it loops-the loop, corkscrews, hairpin bends and stomach churning drops follow in quick succession?

Nearby is Maastricht, where many of the buildings have been conserved in the 17th century period. We would include a visit to the bustling market for some personal shopping. An afternoon visit is planned to Mosaqua Water Park, a tropical theme pool with indoor wave pool, Supertube, rapids and a 92m long slide. Laserquest and Toboggan rides are included. In 2016 we also enjoyed a tour at the Borussia Mönchengladbach stadium.

We have to be flexible about fitting in all of these visits as the fixtures cannot be confirmed until a couple of weeks before our departure. **The approximate cost for this visit is £460 to include transport, full board, entry to all attractions and the fees for each of the fixtures.** Departure is around 06.00am on Sunday 11th June, return to school will be approximately 21.00 on the 16th June 2017. All the final details will be confirmed at a parents meeting in May before the pupils depart.

Headteacher: Mr J Wood

St. Aidan's Church of England High School, Oatlands Drive, Harrogate, North Yorkshire HG2 8JR

Tel: 01423 885814 • Fax: 01423 884327 • Email: admin@staidans.co.uk • www.staidans.co.uk



ST. AIDAN'S

CHURCH OF ENGLAND HIGH SCHOOL



ST AIDAN'S TRIP TO SORRENTO (1 COACH) 12TH – 16TH JUNE 2017

Geography is the study of Earth's landscapes, peoples, places and environments. The Sorrento Trip provides an opportunity for students to see how tectonic activity has created a unique environment and how volcanic activity has impacted on people. It also provides the opportunity to look at how landscape and climate influences the way of life and economy of the area. The scenery, weather and activities are fantastic but students must be prepared and willing to watch, listen and explore. This is a very busy trip with lots of activities and long days, and students will be expected to complete some work to enhance their experience.



We hope to include in the trip the following:

- A half day hike up to the crater of the famous Mount Vesuvius and introduction to the area
- A session with a local ice cream maker lets students see how the famous Amalfi lemons are made into delicious ice cream. There will be other opportunities to sample traditional dishes and culture of the region
- A visit to a working farm to see how agriculture adapts to the climate and landscape of the area
- A tour of Herculaneum, a town that was completely buried by the eruption of Mount Vesuvius in 79AD. A small part of it has been excavated to reveal buildings, statues and some fantastic Roman mosaics and paintings.
- A half day visit to Pompeii provides another example of a preserved Roman settlement. The group will take a walking tour through the buildings of the old town where there are well-preserved examples of Roman buildings.
- A boat trip along the coast from Amalfi provides an opportunity to see a variety of coastal features like caves and stacks and clearly highlights the importance of tourism to this area.

The trip will cost approx. £725.00 which will include full board accommodation, flights, activities and return transport to the airport from St Aidan's. You will be informed of all the final details at a parents meeting in May before the pupils depart.

Headteacher: Mr J Wood

St. Aidan's Church of England High School, Oatlands Drive, Harrogate, North Yorkshire HG2 8JR

Tel: 01423 885814 • Fax: 01423 884327 • Email: admin@staidans.co.uk • www.staidans.co.uk



ST. AIDAN'S

CHURCH OF ENGLAND HIGH SCHOOL

ST AIDAN'S VISIT TO THE RHINE, GERMANY (1 - 2 COACHES) 12 – 16 JUNE 2017

This is an exciting opportunity for Year 9 students to visit one of the most breathtakingly beautiful parts of Germany, to discover the cultural highlights of the region and for those learning German to improve their speaking skills.



This trip is open to **all** year 9 students. Travel is by executive coach and ferry direct from St Aidan's to our hotel in the historic town of Boppard, situated on the banks of the Rhine for 4 nights. Accommodation is in a centrally located hotel with various room sizes for pupils, en-suite facilities and on a full-board basis.

Each day we will have time together as a group to discuss the learning opportunities for the day ahead before setting off on a coach outing to local places of interest. We will be visiting the picturesque towns of Boppard and Koblenz, both of which have lots of history and excellent shopping facilities! A Rhine river cruise will reveal hidden castles and fairytale scenery. Two chair lift rides will ascend us into the heights of the German countryside with stunning views of the Rhine Valley and enchanted caves and towers to discover. A trip to the Bridge at Remagen offers an interesting insight into World War 2 and a visit to the Marksburg Castle sees pupils exploring castle life throughout the ages and the opportunity to experience the perils of a medieval torture chamber!! With additional mini-golf and swimming there will be plenty to keep us busy!

No school trip to the Rhineland would be complete without a day at Germany's largest theme park, Phantasialand, where students can enjoy the thrills of the roller coasters, white water log rides, amazing live shows and much more.



This is an all-inclusive trip with full board accommodation whilst in Germany, transport and entrance fees to all attractions are included in the price. The approx. price for the trip will be **£380.00**. We will travel via Dover departing school around 06.00am on Monday 12th June and return on the 16th June arriving at school at approx. 21.30pm. You will be informed of all the final details at a parents meeting in May before the pupils depart.

Headteacher: Mr J Wood

St. Aidan's Church of England High School, Oatlands Drive, Harrogate, North Yorkshire HG2 8JR

Tel: 01423 885814 • Fax: 01423 884327 • Email: admin@staidans.co.uk • www.staidans.co.uk



ST. AIDAN'S

CHURCH OF ENGLAND HIGH SCHOOL



ST AIDAN'S VISIT TO DUBLIN (1 COACH) 12 – 16 JUNE 2017

This new and exciting opportunity is open to all Year 9 pupils which will enable the pupils to experience the rich character and unique atmosphere of Dublin, Ireland. The trip will be for 5 days, 4 Nights and we will depart school by coach and travel on the ferry from Holyhead over to Dublin. The students and staff will stay in central Dublin and will have full board accommodation for the duration of the trip.

We will undertake a full and entertaining itinerary and all activities will be included in the price. The trip will include:

- A 2 hour guided historical tour of Dublin
- Dublin Castle - Dublin Castle off Dame Street, Dublin, Ireland, was until 1922 the seat of the United Kingdom government's administration in Ireland, and is now a major Irish government complex
- Dublinia - is a historical recreation museum and visitor attraction in Dublin, Ireland, focusing on the Viking and Medieval history of the city. Dublinia is located in a part of Dublin's Christ Church Cathedral, known as the Synod hall
- Giant's causeway - The Giant's Causeway is an area of about 40,000 interlocking basalt columns, the result of an ancient volcanic eruption. It is also known as Clochán an Aifir or Clochán na bhFomhórach in Irish and the Giant's Causeway in Ulster-Scots
- Tayto Park and Dublin Zoo - **Tayto Park** is a Theme Park & Zoo in Meath, Ireland. Tayto Park Theme Park & Zoo offers over 100 attractions in the theme park & zoo.
- Travel by Executive Coach
- Dinner each evening at an Irish Restaurant

Further activities will be added and the full itinerary will be confirmed at the parent / student meeting in May which everyone going on the trip will be invited to. The cost of the trip will be approximately **£525.00**. The trip will depart around 9.00am on Monday 12 June returning early evening on Friday 16th June.

Headteacher: Mr J Wood

St. Aidan's Church of England High School, Oatlands Drive, Harrogate, North Yorkshire HG2 8JR

Tel: 01423 885814 • Fax: 01423 884327 • Email: admin@staidans.co.uk • www.staidans.co.uk