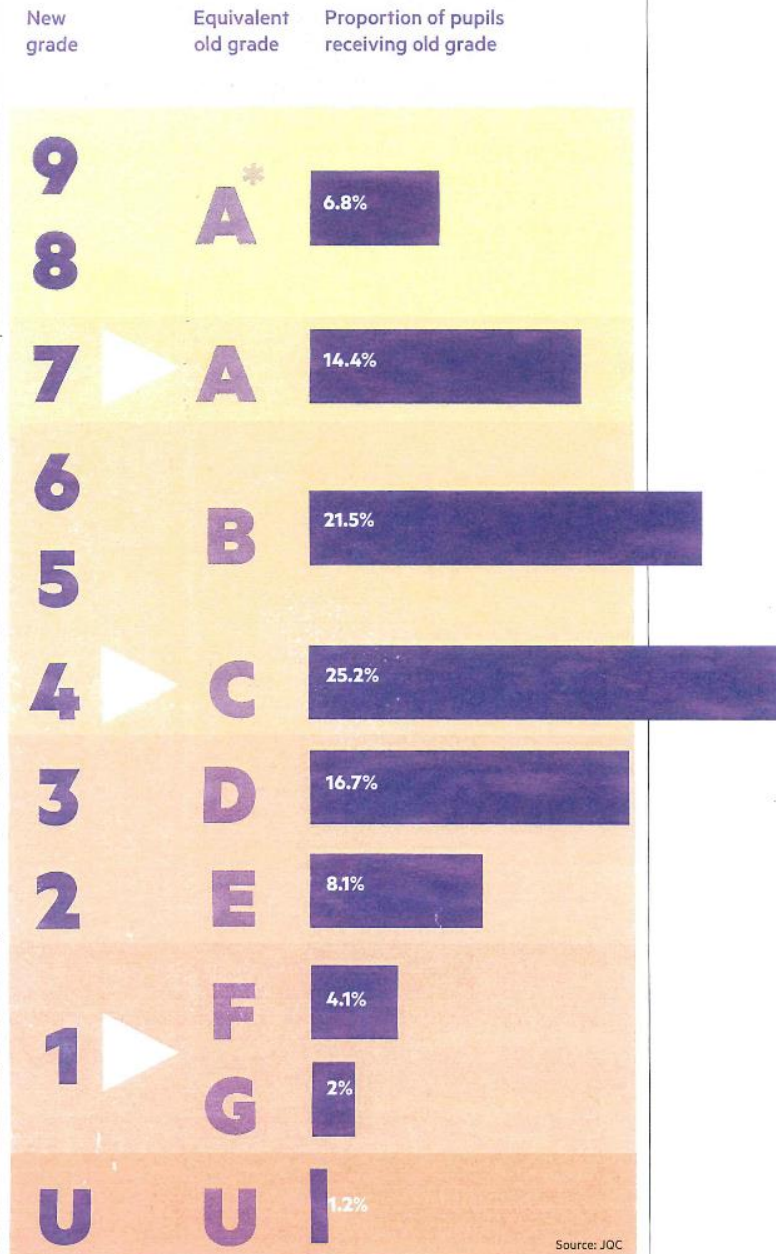




- ❖ The Key Stage 4 Curriculum
Martyn Beer - Deputy Head
- ❖ How to approach GCSEs
Ruth McQuire - Senior Teacher
- ❖ English and Maths GCSEs
Sarah Fairburn - Head of English
Graeme Daly - Head of Maths
- ❖ Pastoral Support
Lee Margerison - Head of Year 10
- ❖ Conclusions
Martyn Beer - Deputy Head
- ❖ Refreshments and opportunity for further discussion
Hatcher Room

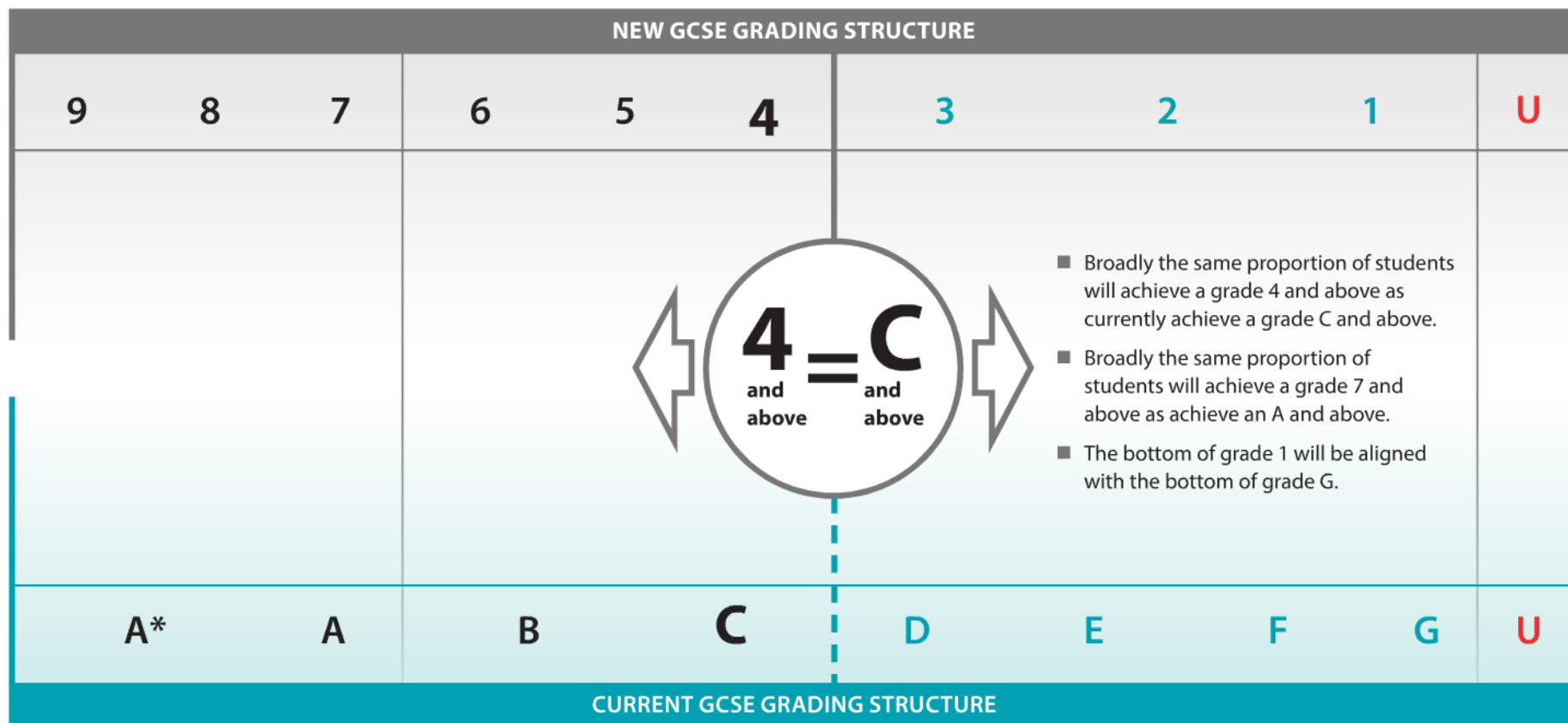


How the new GCSE grades measure up



Source: JOC

Grading the New GCSEs in 2017



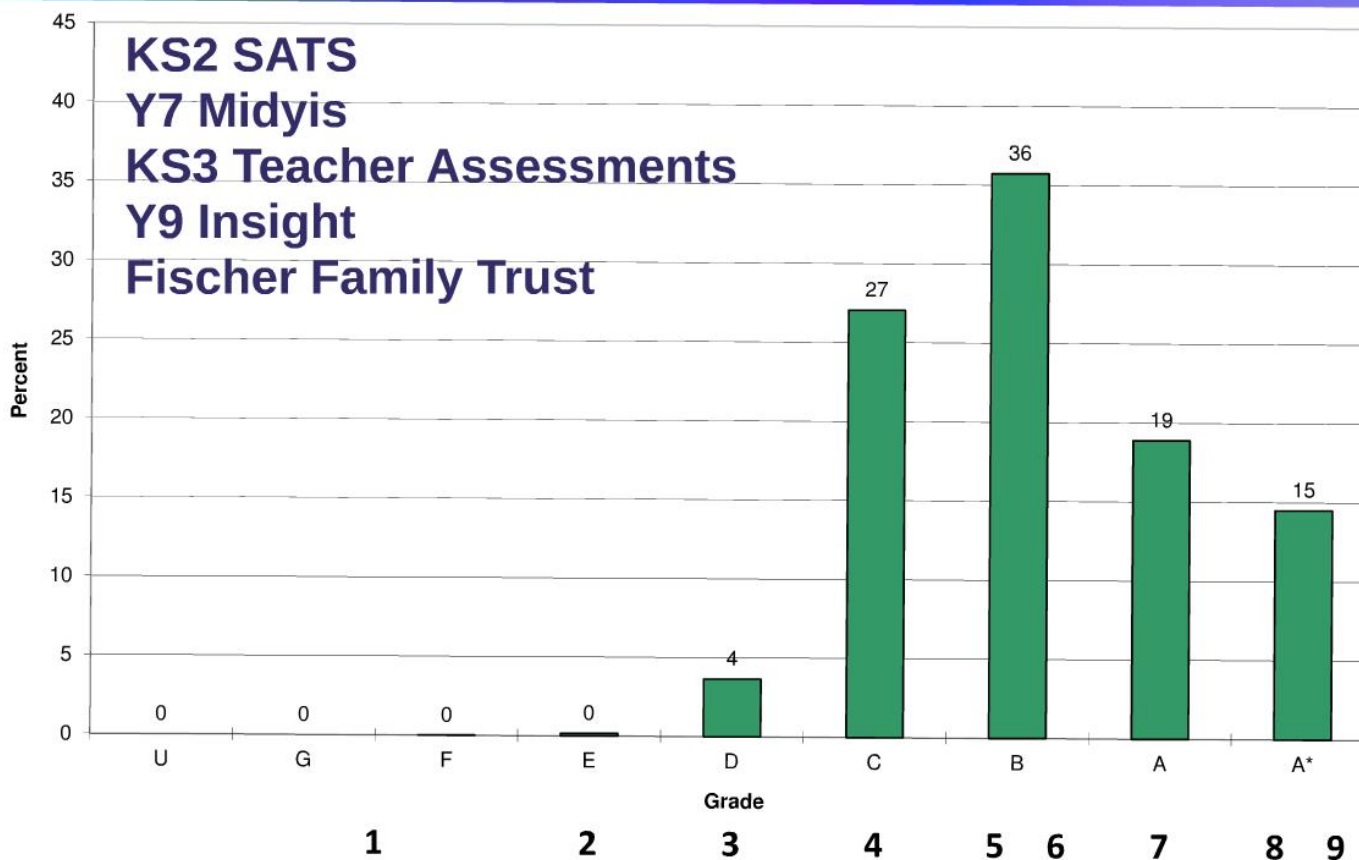


KS4 Report

Subject	Projection	Teacher Comment	CODE for Learning			
			C	O	D	E
English	8		3	2	3	4
Maths	7		3	3	3	3
Science	B		3	2	1	1
French	A		3	3	4	4
Spanish	A/B		2	3	4	3
PE	A		3	4	4	4
Art	A		3	4	4	4
Technology	A*		3	5	4	5
Music	B		4	3	3	3
History	B		3	3	3	3
Geography	A/A*		2	3	2	2
Based on prior attainment (KS2 and previous years' attainment at St Aidan's) you are forecast to achieve grade A/ A* 8/9						



B or 5/6





Study habits

- Dedicated and undisturbed study time
- Regular learning and testing
- Acting on high quality feedback

Extra-curricular

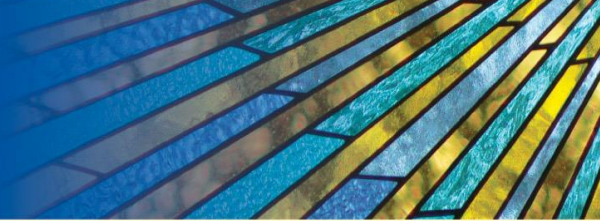
Good relationships



“... is based on the belief that your basic qualities are things you can cultivate through your efforts – **everyone can grow** through application and experience”

Carol Dweck





- Supported challenge
- Self-regulation (meta-cognition)
- Practice and improvement





ST. AIDAN'S
CHURCH OF ENGLAND HIGH SCHOOL



St Aidan's CODE for learning

Pupils are encouraged to do the following to help them learn:

C

Community

- Work together cooperatively
- Have respect for others
- Engage positively in their learning

O

Organisation

- Plan and reflect
- Meet deadlines
- Be ready to learn

D

Determination

- Focus on the tasks
- Be resilient in their learning
- Be prepared to work hard

E

Enterprise

- Take the initiative
- Use the resources available intelligently
- Think independently and set goals



The teaching of the new specifications started in Year 9

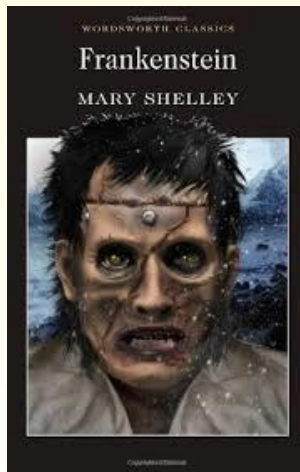
ENGLISH LANGUAGE:

- ❖ **PAPER 1 CREATIVE READING AND WRITING (EXAM 1 HOUR 45 MINUTES)**
- ❖ **50% OF QUALIFICATION (EXTRACT FROM 20TH/21ST CENTURY FICTION AND NARRATIVE/DESCRIPTIVE WRITING)**
- ❖ **PAPER 2 WRITERS' VIEWPOINTS (EXAM 1 HOUR 45 MINUTES)**
- ❖ **50% OF QUALIFICATION (NON-FICTION/NON-LITERARY TEXTS AND WRITING TO EXPLAIN A POINT OF VIEW)**



PAPER 1 SHAKESPEARE/19TH CENTURY NOVEL

1 HOUR 45 MINUTES EXAM 40% WEIGHTING



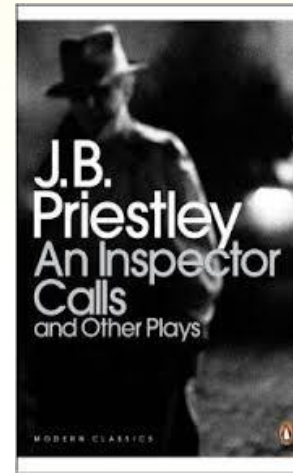
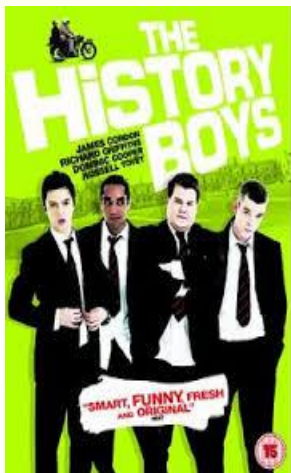


PAPER 2: MODERN TEXTS AND POETRY EXAM

2 HOURS AND 15 MINUTES 60% OF
QUALIFICATION

(Poetry dominant weighting)

How can parents help?





- GCSE Maths is being taught as a three year course
- 3 exams, each 90 minutes long
- What can you do to help and support your child?





- ❖ Head of Year is the first point of contact with any pastoral concerns.
- ❖ Parents' Evening (18th November) will provide further opportunities for discussions.
- ❖ The tutorial programme will be informative and support students throughout their GCSE courses.
- ❖ Encourage a balanced approach in terms of academic work and extra curricular activities.



- ❖ Professionally qualified Careers Advisers to offer careers information, advice and guidance
- ❖ All students will have career guidance interviews to help with Post 16 Options
 - Sixth Form, College and Apprenticeships
- ❖ Be Real Day in Year 10
- ❖ Work Experience at end of Year 11
- ❖ STEM Careers Evening on Thursday 10th March
- ❖ Career talks and events throughout the year
- ❖ Parents/Carers are always welcome to get in touch with the Careers Department